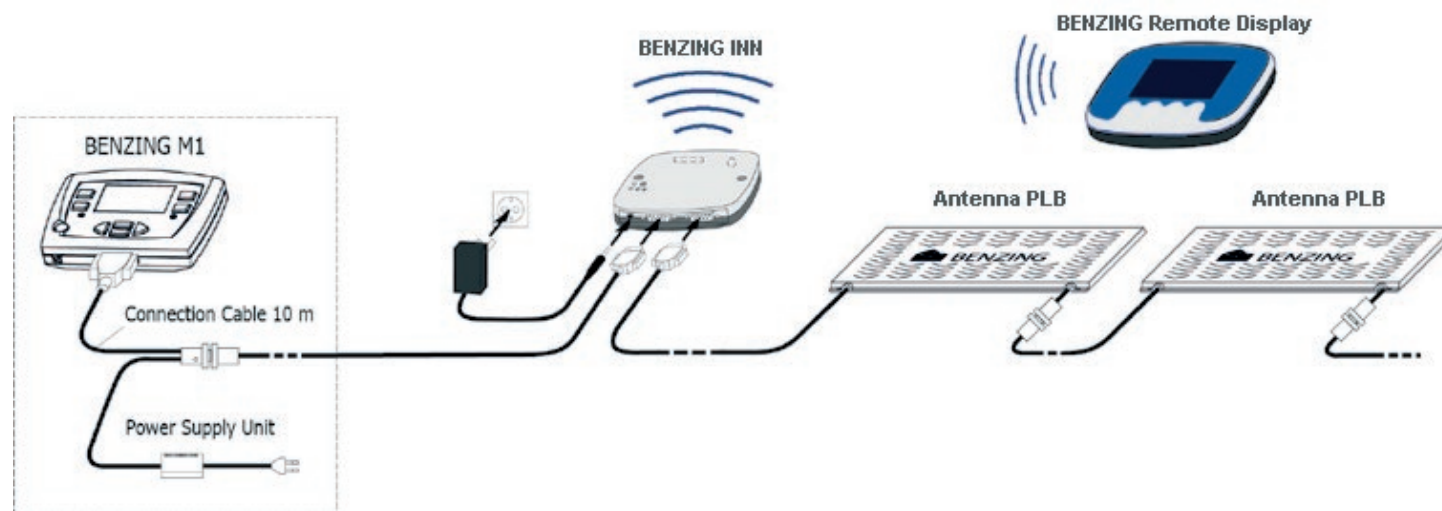


# BENZING Remote Display

## Easy Manual

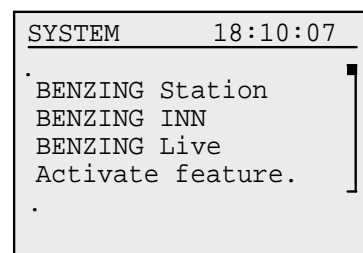
### Step 1 Easy set-up of the BENZING Remote Display

1. The minimum required firmware version of the BENZING M1 is version: "3.12".
2. The minimum required firmware version of the BENZING INN is "1.2".  
The latest available BENZING Download software is located at our website <http://www.benzing.cc>.
3. Connect the Loft Antennas together.
4. Connect the BENZING INN with the loft antennas.
5. Connect the BENZING M1 with fancier cable to the BENZING INN.
6. Plug-in the power supply unit to mains power.
7. Press the green button at the BENZING Remote Display to check that the BENZING Remote Display is running.

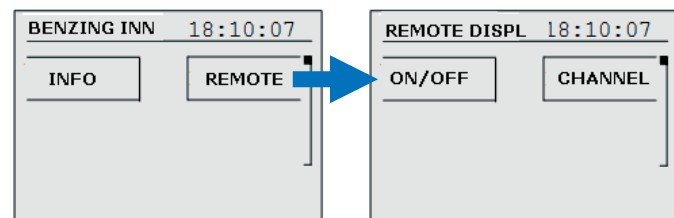


### Step 2 Activate the BENZING Remote Display at the BENZING M1

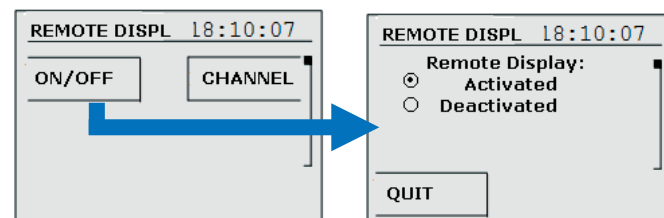
After the BENZING M1 is running, open up the system menu by pressing: MENU → SYSTEM.



To get into the BENZING Remote Display menu, open the BENZING INN menu by pressing BENZING INN → REMOTE.

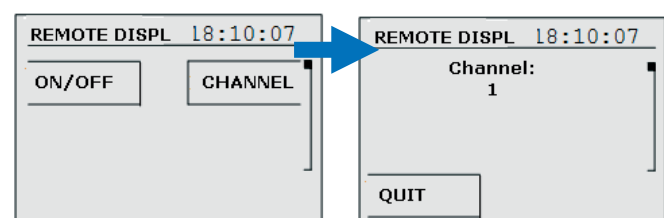


Press "ON/OFF" to get into the menu to activate or deactivate the remote Display.



Select "Activated" in order to activate the radio transmitter and press "OK".

After the channel at the BENZING M1 and BENZING Remote Display has been selected, you should see the signal strength at the main page of the Remote Display.



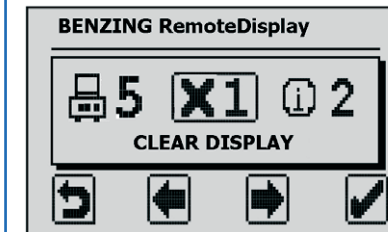
**Note:** If the channel has been changed, be sure to change also the channel at the Remote Display menu, as shown at step 3.

### Step 3 Configure the BENZING Remote Display

Open up the System Menu at the BENZING Remote Display:

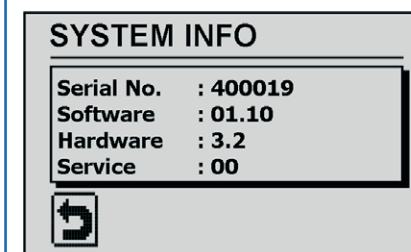


The system menu opens up. Here you are able to configure all the necessary settings for the BENZING Remote Display.

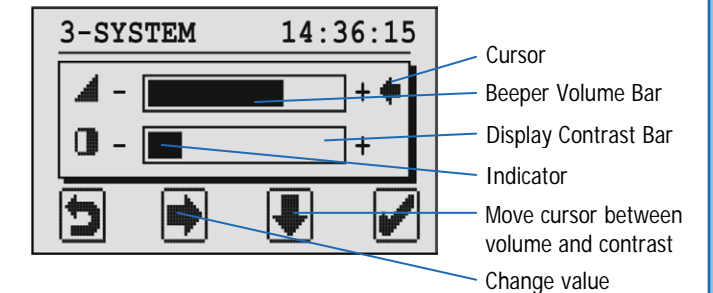


**X1 CLEAR DISPLAY:** Press this button to clear all the arrival data at the BENZING Remote Display. The data will not get deleted at the BENZING M1.

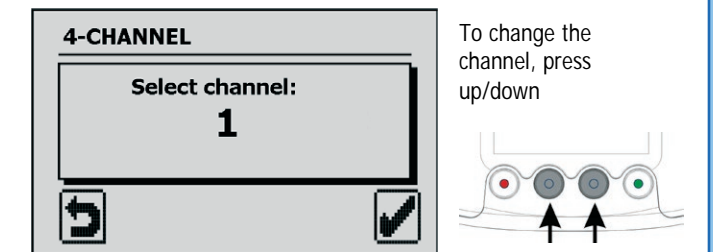
**2 SYSTEM INFO:** If you experience any problem, please lookup these details for further assistance.



**3** With the **VOLUME/DISPLAY** menu you can change the volume of the beeper and the display contrast.



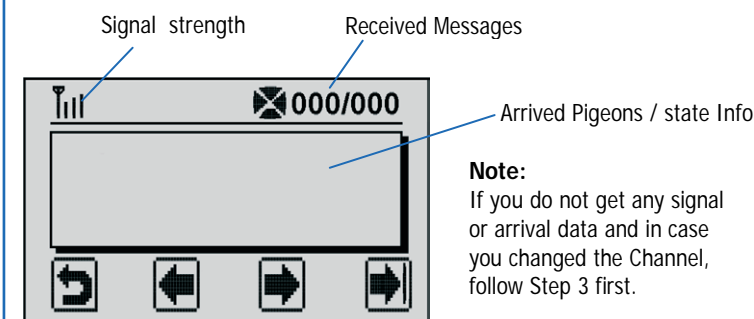
**4 CHANNEL:** Change the channel to the same one, which is configured at the BENZING M1 for the BENZING INN. If you change the channel within this menu, you have to change it also at the BENZING M1.



**5 PC COMMUNICATION:** This function is used to update the BENZING Remote Display. A how-to update manual is attached within the Remote Display Download.

### Step 4 Operation and Main Menu of the BENZING Remote Display

To activate the BENZING Remote Display, press any button. The display like on the picture below will be shown.



**Signal Strength**  
You can see the signal strength in the left upper corner. The BENZING Remote Display receives a signal up to 150 meter distance.

**Received Arrival Messages**  
In case of an active race or training the total number of arrived messages will be shown here. Messages are limited to 50. If the BENZING Remote Display is receiving more messages, it will prune the oldest.

**Arrived Pigeons**  
The arrived pigeons will get displayed here.

With the middle two buttons you can scroll through the arrival list. When a new pigeon arrives, the list will automatically be scrolled forward and the new pigeon will be displayed in the information field.

When pressing the green button once, the list scrolls forward to the last arrived pigeon.